

## RMI Magister - Charleroi

### Project Details

#### Activities

Buildings  
Offices

#### Contractors

Franki

#### Location

Boulevard Tirou  
6000 Charleroi Belgium  
Hainaut BE

#### Client

IRET

#### End User

Renaissance Magister Invest - RMI

#### Architects

DDS & Partners

Special features [LEAN](#)

#### Construction period

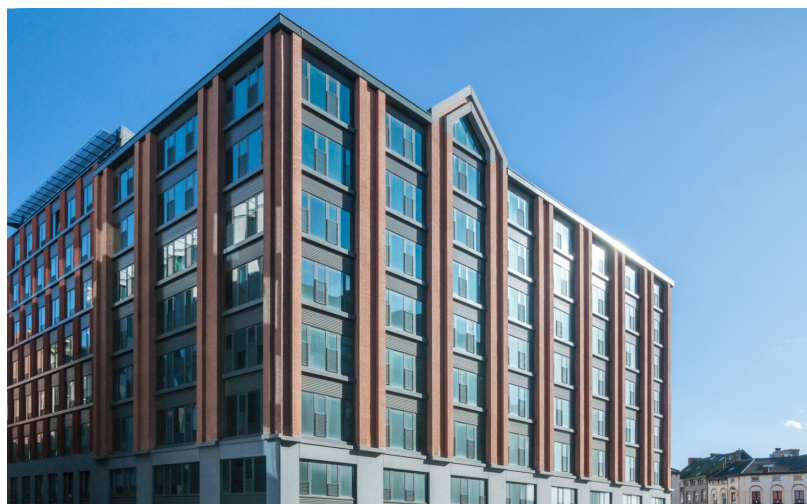
5 years 11 months

#### Start work

01-2015

#### End of work

12-2020



Phase 1: In early 2015, Franki started work on the renovation and extension of an office building on Boulevard Tirou in Charleroi on behalf of Iret Development. The project comprises a total of 13,000 m<sup>2</sup> of office space. There is also a two-storey underground car park. The works were completed in March 2016.

Phase 2: From 02/2020 to 12/2020. Making the Magister office building compliant.

### Franki



Chemin des moissons, 10  
4400 Flémalle, Liege (Belgium)  
tel +32 4 2505150 | +32 4  
3493939  
info@franki.be  
[www.franki.be](http://www.franki.be)

Since 1998 Franki has been part of Willemen Groep, the largest family construction group in Belgium.