

RMI Magister - Charleroi

Project Details

Activities

Buildings
Offices

Contractors

Franki

Location

Boulevard Tirou
6000 Charleroi Belgium
Hainaut BE

Client

IRET

End User

Renaissance Magister Invest - RMI

Architects

DDS & Partners

Special features [LEAN](#)

Construction period

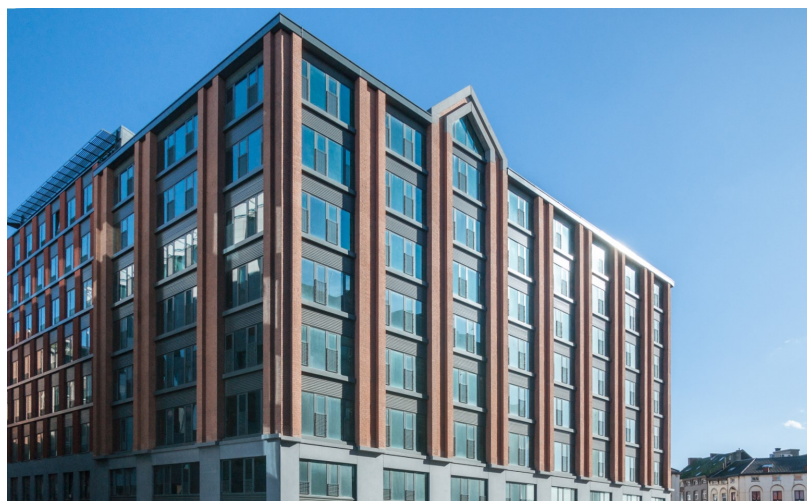
5 years 11 months

Start work

01-2015

End of work

12-2020



Phase 1: In early 2015, Franki started work on the renovation and extension of an office building on Boulevard Tirou in Charleroi on behalf of Iret Development. The project comprises a total of 13,000 m² of office space. There is also a two-storey underground car park. The works were completed in March 2016.

Phase 2: From 02/2020 to 12/2020. Making the Magister office building compliant.

Franki



Chemin des moissons, 10
4400 Flémalle, Liege (Belgium)
tel +32 4 2505150 | +32 4
3493939
info@franki.be
www.franki.be

Since 1998 Franki has been part of Willemen Groep, the largest family construction group in Belgium.